

K560

KNUCKLEBOOM LOADER



PERFORMANCE BENCHMARK.

As the industry benchmark for nearly 20 years, the loader hydraulic system features superior multi-functioning capability enabling operators to lift, swing and rotate grapple simultaneously without impairing performance.



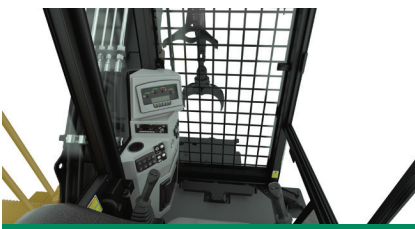
SUPERIOR FEEL.

The precisely tuned pilot controls provide feedback through the joysticks and foot pedals during dynamic operations providing the operator a superior feel of the machine. This results in smoother movements and finer controllability.



OPERATING MODES.

Select from three operating modes to meet fuel consumption and production requirements. All modes maintain a consistent system pressure which allows lift capacity and swing torque to remain equal regardless of the mode selected.



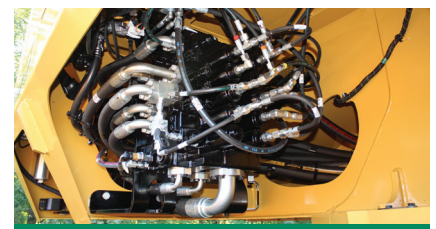
OPERATOR COMFORT.

The new all down stabilizer function provides uniform stabilizer cylinder force improving machine footing. Combined with a quiet cab, great visibility and a powerful HVAC system keep operators comfortable and productive.



EXCELLENT SERVICEABILITY.

Ground level access of engine, fuel, pilot, case drain filters and the standard electric hydraulic oil fill pump make for safe, easy service. The new grapple rotate flushing reminder ensures oil is circulated back through the filter.



GREATER DURABILITY & RELIABILITY.

The hydraulic system and components have proven to be the most durable system ever designed into a knuckleboom loader. Extreme duty booms and structures are designed to withstand heavy side-to-side delimbing applications day in and day out.

K560 SPECIFICATIONS

Engine Model	Cat® C4.4 Tier 4 Final	Fuel Capacity	100.0 gal 378 L	Maximum Reach	32' 0" 9.75 m
Gross power	173 hp 129 kW	DEF Capacity	5.0 gal 19 L	Transport Width	8' 6" 2.57 m
Engine Speed	1800 rpm	Swing Torque	49,173 lbf-ft 66 870 N·m	Transport Height	13' 3" 4.04 m
Weight	33,800 lb 15 331 kg	Swing Speed	11 rpm	Transport Length	52' 1" 15.88 m

Base configuration includes standard loader hydraulics and standard boom and stick. All transportation dimensions are of a trailer mounted loader.

POWERTRAIN

Cat C4.4 engine certified to EPA Tier 4 Final
Primary and secondary fuel filters, including water separator
Electric fuel priming pump
Electric fuel transfer pump
2-Stage engine air cleaner
Oversized cooling system
Engine driven, on demand cooling fan
Engine auto idle down

HYDRAULICS

Excavator style "negacon" pump control system
Variable displacement pumps
High performance, multi-functioning main control valve
Bar slasher/delimer hydraulic package
In-line return filter
Electric hydraulic oil fill pump
Pilot accumulator for boom lowering
Manual boom lowering control valve

OPERATOR ENVIRONMENT

Enclosed cab with swing out front window guard meeting SAE J2267
Dual pilot joystick control with foot pedal swing
Reverse slope tinted windshield and skylight
Sunshade
High capacity HVAC system
Air suspension high back seat
AM/FM/Bluetooth Radio
24V to 12V converter and 2 x 12V power port
Windshield wiper
Advanced Operating Modes: Power, Run, Economy
All down stabilizer controls
Stabilizer movement and pilot arming alarm
Integrated trailer hydraulic landing gear control
Computerized Monitoring System

ELECTRICAL

100 ampere alternator
24-volt electrical system with 2 12-volt batteries
Main disconnect switch with Diesel Exhaust Fluid (DEF) purge indicator light
6 halogen working lights
1 halogen engine compartment service light
20 circuit electric swivel
Product Link™ Ready

OTHER STANDARD EQUIPMENT

Extreme-duty delimbing boom and stick
Heavy-duty, extended length center mount sub-frame
Flat top sub-frame deck with bolt-on skid resistant fenders
Bolt-on sub-frame ladder
12" (305 mm) grapple mounting knuckle
Ground level remote fuel and engine oil filters
S-O-S sampling ports
Ecology drains (engine oil, DEF, hyd tank)

OPTIONAL EQUIPMENT

Extended Single "V" or Double "V" heels
Delimer & Trailer Package
Includes: 426 Delimer & 50' Crawler Trailer w/ Hydraulic Landing Gear
Delimer & Trailer Ready
Includes: Integrated trailer hydraulic landing gear controls
4548 Straight Narrow Jaw Grapple (Grapple Saw Ready w/ 3 Port Swivel)
4548 Tapered Wedge Jaw Grapple (Grapple Saw Ready w/ 3 Port Swivel)
5055 Straight Narrow Jaw Grapple (Grapple Saw Ready w/ 3 Port Swivel)
5055 Tapered Wedge Jaw Grapple (Grapple Saw Ready w/ 3 Port Swivel)
5055 Straight Narrow Jaw Grapple
5055 Tapered Wedge Jaw Grapple
2 Additional bolt-on sub-frame ladders
Slasher Hydraulics Adapter (JIC to O-Ring Face Seal)

SALES AND SERVICE

Sold and serviced exclusively through Weiler Forestry dealers worldwide

WEILERFORESTRY.COM

WARRANTY

12 months standard, extended warranty available

Materials and specifications are subject to change without notice.
Featured machines and photos may include optional equipment. All rights reserved.

K560, SS (10-2019)