

# E2850B

REMIXING TRANSFER VEHICLE



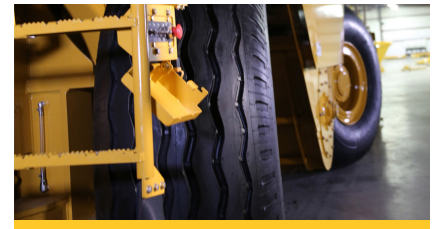
## NON-STOP, NON-CONTACT PAVING.

With 25 tons (22.7 mt) of onboard storage, triple pitch remix augers and 600 tph (544 mtpb) discharge capacity, the E2850B keeps the paving train moving while reducing particulate and thermal segregation for smooth, long-lasting roads.



## MATCH PAVING OUTPUT.

The variable speed elevator and conveyors allow the E2850B to match plant output while reducing wear. By setting chain speed to match production, the number of revolutions of the chain are reduced and larger packets of mix are carried with each slat, reducing material segregation.



## UNMATCHED MANEUVERABILITY.

The rear steer option provides an inside turning radius of 14' (4.2 m). The crab and coordinated steering functions return to center with the auto center feature providing enhanced control on tight jobsites and when loading and unloading for transport.



## STORAGE HOPPER MANAGEMENT.

The optional storage hopper management system features a proprietary sonic sensor that continuously measures the amount of material in the storage hopper. Two indicator lights allow the entire paving crew to know the material level at all times while the operator can see a percentage readout on the display.



## COMPLETE CONTROL.

The 18" (457 mm) shifting operating platform and conveniently located controls provide the operator with excellent visibility and comfort. The paver hopper management system maintains a set distance to the paver while managing the material level in the paver hopper insert. The camera system features 4 cameras and full-color monitor.



## DESIGNED AROUND CLEANOUT.

Full-width, hydraulic drop down floors along with four clam-shell doors for ground level access to the storage hopper and remix augers provide unmatched access for daily cleanout and weekly inspections. With the addition of the optional internal spray down system for chains and sprockets, the E2850B is designed to simplify the critical daily clean-out process.

# E2850B SPECIFICATIONS

<b>WEIGHT</b>	75,000 lb	34 019 kg
<b>TRANSPORT HEIGHT</b>	11' 4"	3454 mm
<b>TRANSPORT LENGTH</b>	54' 1"	16 484 mm
<b>TRANSPORT WIDTH</b>	9' 10"	2997 mm
<b>WORKING HEIGHT</b>	16'	4877 mm
<b>ENGINE</b>	Cat® C7.1 Tier 4	
<b>HORSEPOWER</b>	300 hp	223 kW

<b>TRANSPORT SPEED (MAX)</b>	10 mph	16.1 km/hr
<b>WORKING SPEED</b>	194 fpm	59 mpm
<b>CONVEYOR CAPACITY</b>	600 tph	544 mtph
<b>CONVEYOR SLAT WIDTH</b>	36"	914 mm
<b>ELEVATOR CAPACITY</b>	1,000 tph	907 mtph
<b>ELEVATOR SLAT WIDTH</b>	56"	1422 mm
<b>FUEL TANK CAPACITY</b>	150 gal	568 L

<b>HYDRAULIC TANK CAPACITY</b>	100 gal	378 L
<b>TURNING RADIUS</b>	14'	4.2 m
<b>TIRES</b>	High Flotation 21"-25" 28 ply	
<b>GROUND DRIVE</b>	4-Wheel Hydrostatic w/ 3 Speeds	

## POWERTRAIN

Cat® C7.1 Tier 4 Engine with 300 hp (223 kW)  
4-wheel drive  
Shift-on-the-fly 3-speed hydrostatic drive  
194 fpm (59 mpm) working speed  
10 mph (16.1 km/hr) transport speed  
Optional rear steer with 14' (4.2 m) turning radius

## OPERATING ENVIRONMENT

18" (457 mm) sliding operator platform  
Convenient control locations on single panel  
Dual side dump hopper control stations  
Rear control station for cleanout and hopper insert placement  
Digital controller for system calibrations  
Dual fume extraction system  
Optional storage hopper management system  
Optional paver hopper insert management system  
Optional distance to paver control  
Optional camera system w/ 3 cameras and 7" (178 mm) color display

## MATERIAL DELIVERY

25 ton (22.7 mt) storage hopper capacity  
1,000 tph (907 mtph) elevator capacity  
600 tph (544 mtph) discharge conveyor capacity  
Variable speed elevator and conveyor  
Dump assist hydraulic moving floor  
Auto dump hopper cycle  
Heavy-duty, cast dump hopper augers  
Triple-pitch, cast remix augers  
High torque, direct-drive motors  
14' 9" (4.5 m) max conveyor swing in either direction  
Windrow head attachment option

## CLEANOUT

Full-width, hydraulic cleanout doors on elevator/conveyors  
Full-width dump hopper cleanout door  
Four clam shell doors for storage hopper access  
Two hydraulic remix chamber cleanout doors  
Optional internal spray down system

## SERVICE/MAINTENANCE

Optional hydraulic conveyor chain tensioner  
Chromium Carbide wear plate below conveyor foot shaft  
Separated foot shaft bearings  
Three large engine access doors  
Easily accessible battery compartment  
Braided electrical harnesses and sealed connections  
Color-coded electrical wires  
Optional auto greaser system

## OPTIONAL EQUIPMENT

Rear steer  
Truck hitch  
Windrow head in addition to truck dump hopper  
Conveyor auto chain tensioner  
AR400 1/4" (6.35 mm) storage hopper liner  
Chromium carbide floor plates  
Separate 60 gal (227 L) tank for tire spray system  
Chain and sprocket internal spray down system  
Tire spray system  
LED work lights (2 head, 6 work, 2 ground and strobe)  
LED blade lights  
Truck signal lights  
12kW generator  
Paver hopper management with distance to paver  
Storage hopper management system  
Camera system w/ 7" (178 mm) color display & 3 cameras  
Automatic greaser - 45 points  
13 (11.8 mt) or 17 ton (15.4 mt) bolt together hopper insert

## SALES AND SERVICE

Sold and serviced exclusively through Caterpillar dealers worldwide.

## WARRANTY

12 months standard. Extended warranty available.