

S200

SOIL STABILIZER



ROTOR OPTIONS.

Available with either a soil or combination rotor powered by dual planetary drive motors with a max drum speed of 150 rpm. The 78" (1981 mm) wide drum has a max working depth of 14" (355 mm).



AUTO DEPTH SET POINT.

The automatic depth set point feature allows the operator to set the desired rotor depth and return to that same depth with the push of a button on the joystick. Depth reading is visible to the operator on the full color display.



AUTO LOAD CONTROL.

The automatic load control feature monitors system pressures to set ground speed to maximize efficiency of the machine and eliminate overloading the mixing chamber and stalling the rotor.



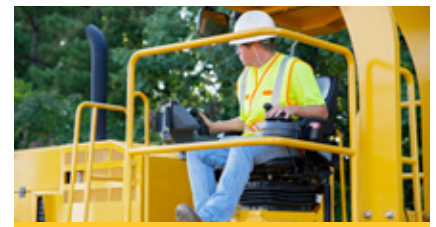
REAR STEER OPTION.

The optional rear steer reduces the turning radius from 37' (11.3 m) to 23' (7 m) for high maneuverability on tight jobsites. The rear steer provides four steering modes: front steer, rear steer, crab steer and coordinated steer and features an auto return to center.



MACHINE TILT OPTION.

The optional machine tilt feature allows the S200 to tilt up to 5° in either direction to match grade conditions and provide excellent gradation in varying applications.



COMFORT AND CONTROL.

The operator seat slides across the platform and rotates 357° providing excellent visibility for the operator. High-back, suspension seat and easy-to-reach controls provide a comfortable working environment with angled ladder access from both sides of the machine.

S200 SPECIFICATIONS

WEIGHT	40,000 lb	18 143 kg	ENGINE	Cat® C9.3B Tier 4		DRUM DIA. W/ TEETH	48"	1219 mm
HEIGHT	11' 5"	3480 mm	HORSEPOWER	375 hp	279 kW	DRUM SPEED (MAX)	150 rpm	
LENGTH	27' 8"	8432 mm	TRANSPORT SPEED (MAX)	10 mph	16 km/hr	FUEL TANK CAPACITY	190 gal	719 L
WIDTH	8' 2"	2489 mm	WORKING SPEED (MAX)	180 fpm	55 mpm	HYDRAULIC TANK CAPACITY	90 gal	340 L
WHEELBASE	129"	3276 mm	CUTTING WIDTH	78"	1981 mm	FRONT TIRES	14.9-24 8 PR	
GROUND CLEARANCE	19"	482 mm	CUTTING DEPTH (MAX)	14"	355 mm	REAR TIRES	28LR26 165 LI	

POWERTRAIN

- Cat® C9.3B Tier 4 engine with 375 hp (279 kW)
- Cat® C9.3 Tier III engine with 375 hp (279 kW) option
- Hydrostatic 4-wheel drive with 2 speeds
- 180 fpm (55 mpm) working speed
- 10 mph (16 km/hr) transport speed
- 2-wheel steering standard w/ 37' (11.3 m) turning radius
- Optional rear steer with 23' (7 m) turning radius
- True 4-wheel differential lock
- High flotation tires

OPERATING ENVIRONMENT

- High-back, heated suspension seat w/ 357° rotation
- Seat slides from side-to-side across platform
- Convenient control locations on single panel
- Angled ladders with dual side access
- Full color display
- Auto load control
- Auto depth set control
- Sun canopy

ROTOR

- Rear mounted rotor
- Soil (80 tooth) or combination (176 bit) rotor option
- Cat® bits and paddle part numbers
- Dual planetary drive motors
- 78" (1981 mm) cutting width
- 14" (355 mm) max cutting depth
- 48" (1219 mm) rotor diameter with teeth
- Hydraulically adjustable rear rotor gate

SALES AND SERVICE

Sold and serviced exclusively through Caterpillar dealers worldwide.

WWW.WEILERPRODUCTS.COM

SERVICE/MAINTENANCE

- Large engine access doors with gas springs
- Rotor hydraulic bypass for bit changes
- Carbide cutting bits
- Replaceable bit holders
- AR400 rotor skis
- Ground level access to critical components
- LCD display diagnostics
- Braided electrical harnesses and sealed connections
- Color-coded electrical wires

OPTIONAL EQUIPMENT

- Soil rotor (80 tooth)
- Combination rotor (176 bit)
- Rear steer
- Enclosed cabin with AC/heat and LED work lights
- Tractor leveling
- Emulsion water spray system with push bar
- LED lighting
- Toolbox

WARRANTY

12 months standard. Extended warranty available.

QEXQ2408