

# AUGER BUCKETS

CONCRETE AND SANDBAGGER

# BRADCO®

Attaches to universal skid-steer mounting hitch

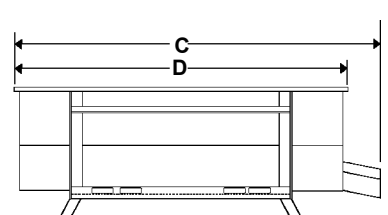
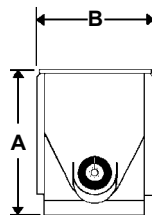


## FEATURES & BENEFITS

- Universal skid-steer mounting on front and back allows right and left discharge.
- Self loading from loose piles.
- Self-sealing discharge outlet.
- Fastest sandbagger manufactured.
- Eliminates waste & unnecessary clean-up.
- Economical & profitable placement of material with less labor.
- 1/2 Yard capacity (Optional 1/4 yard adapter).
- Horizontal steel auger with orbital motor drive.
- Two multi-linked chutes (24" & 36") (60.9 cm & 91.4 cm) for extended placement and efficient flow.
- Two 7' (213.36 cm) Hoses.
- Handles most materials: 1" Slump Concrete, Loam, Sand, Asphalt, Washed Gravel (3/4" Max.), Ag Grains, etc.

## SPECIFICATIONS

A. Overall Height	27.00" (68.58 cm)
B. Overall Width	22.50" (57.15 cm)
C. Overall Length	73.50" (186.6 cm)
D. Overall Bucket Length	68.00" (172.7 cm)
Weight (Empty)	380 lbs (173 kg)
Capacity	1/2 Yard <sup>3</sup>
Max. Dia. / Loose Contents	3/4" (19 mm) stone (Optional Gravel Guard may be required)
<u>Hydraulic Requirements</u>	
12 GPM (45 LPM) 2000 PSI (136 BAR)	Speed 237 RPM
Mounting	Universal Skid-Steer
<u>Auger Specifications</u>	
Length	61.50" (156 cm)
Diameter With Flighting	6.50" (16.51 cm)
Discharge Rate (50 Seconds)	1/2 Yd <sup>3</sup> (.38 m <sup>3</sup> )



ALL SPECIFICATIONS AND DESIGN ARE SUBJECT TO CHANGE WITHOUT NOTICE AND WITHOUT LIABILITY THEREFORE.

Attachment Technologies Incorporated

503 Gay Street · PO Box 266 · Delhi, Iowa 52223 USA  
563-922-2981 · 800-922-2981 · Fax 563-922-2700  
[www.get-attached.com](http://www.get-attached.com)

B-AB-6-00